

IRCON Product Accessories

IRCON offers a comprehensive line of product accessories designed to simplify installation and maintenance, enable greater operator convenience and safety, and assure sensor accuracy and protection while operating in harsh environments.

Sensor Mounting, Protection and Operation:

Air Purges

(AA3, AA5, AP6, APA)



An air purge is designed to fit on the front of a sensor head and blow a constant stream of air past the lens. In dirty, dusty or steam-filled environments, it prevents material from collecting on the lens that may obstruct view of the target and interfere with sensor accuracy.

Air and Water Jackets

(WJ5, WA3, AWC, WJA)



Air and Water Jackets are rugged housings designed to fully or partially enclose and protect a sensor head from high ambient temperatures (up to 200°C / 400°F). By circulating air or water through an enclosed jacket lining, it helps maintain a constant and cool sensor operating temperature, assuring greater accuracy and long term reliability.

Mounting Bases, Flanges and Brackets

(MB5, MFS, RAM, BMA, TM6, SB1, SB4, SB5)



We offer a variety of accessories that make IRCON sensors and/or lenses easy to mount and aim. They facilitate setting the lens into a firmly fixed position, to ensure correct optical alignment to the target being measured.

Sight Tubes:

For furnace refractory applications, ceramic and metallic sight tubes are available to provide an unobstructed line of sight from sensor to target.



Power Supplies:

We offer power supplies suited to the particular requirements of IRCON sensors. Each are designed to simplify wiring, and assure correct power to IRCON instruments.

Thermal Imager Protection:

Maxline 2 X2EEAP Air Purge and Cooling Jacket

A combined Air Purge and Cooling Jacket accessory is available for protection of Maxline 2 thermal imaging cameras.

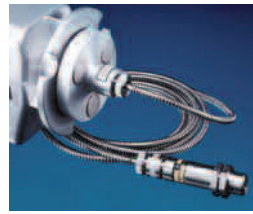


With the Maxline 2 camera enclosed, the Air Purge blows constant air over the window to restrict collection of dust and debris, while the Cooling Jacket protects the camera electronics

from high ambient temperatures (up to 356°F or 180°C) to assure accurate readings.

Sensor Fiber Optic Lens Assemblies:

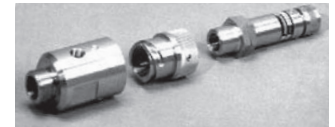
(For Mirage, Modline 3, Infrarail, and SR Series Sensors)



For applications where a target is difficult to sight, the installation area is limited, or the environment contains high ambient temperatures, IRCON fiber optic lens accessories can provide an optical link between the target to be measured and the sensor.

IRCON fiber optic accessories enable temperature monitoring from restricted or awkwardly-positioned perspectives.

The Reimaging Lens can be placed within a severe environment or small space, with the sensing components placed at a distance, with both ends linked by a stainless steel covered fiber optic cable (available in lengths up to 25 feet).



Reimaging lens with miniature quick-release air purge and cooling assembly

The Reimaging Lens component is NEMA-4 rated, housed in stainless steel, includes a protective window and is available with focal ranges including 6 to 10 inches (close focus) or 10 inches to infinity. For particularly hostile environments, small quick-release air purge and cooling accessories are available.

An Illuminator option, designed to temporarily connect at the sensor end of the fiber optic assembly, is available for transmitting bright light through the fiber optic cable and reimaging lens assembly. This is a handy tool when aligning and focusing the lens on a target object, to accurately define the spot size to be measured.

Sensor Displays:

Displays help you monitor temperature from a convenient and safe location.



Temp View: A panel mounted LED temperature display is available for Modline 4, Javelin, MiniIRT and SR Series sensors. Temperature alarm relays are available as an option.

Modline 5 DPM (Digital Panel Meter): Similar to Temp View, a DPM provides temperature display with additional features allowing remote configuration of Modline 5 sensors. Temperature alarm relays are also available as an option.

Modline 5 MSI (Multi Sensor Interface): The MSI includes a 10", NEMA 4 rated touch-panel display, processing capabilities and multiple communication ports, enabling greater process monitoring and control flexibility. Centrally monitor multiple temperature points and alarms, and remotely adjust settings of up to twelve Modline 5 sensors on the production floor, over your company network or the Internet. The system can also capture trend data, and communicate with process control, PLC and SCADA systems.



Software Solutions

For Maxline 2 series thermal Imaging systems:

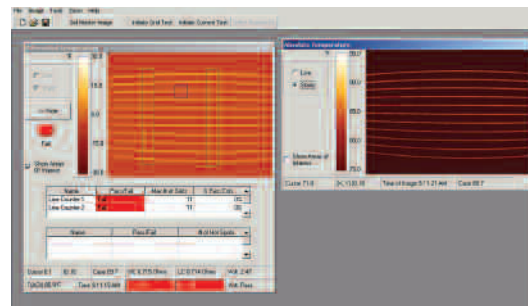
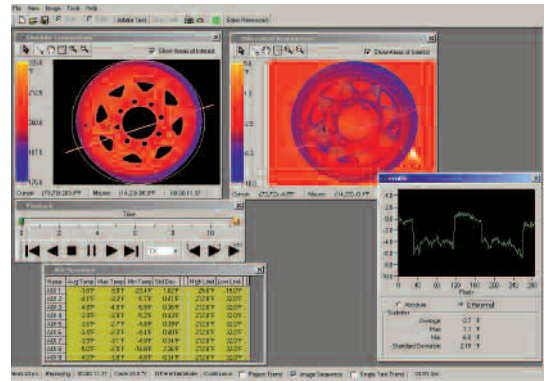
Image Analysis Software - Our general purpose thermal imaging software for R&D, testing, and laboratory applications, it provides a flexible solution to serve a variety of thermal analysis and monitoring applications.

Thermal Seal Inspection Software - Instantly inspect the integrity of seals as each product leaves the thermal sealer, achieving 100% inspection. It is designed to serve food, pharmaceutical, or medical supply manufacturers and other industries where seal integrity is paramount.

Fiber Optic Preform Inspection Software - Designed exclusively to suit the needs of temperature and diameter measurement in fiber optics manufacturing.

Torpedo Car Inspection Software - Designed exclusively for steel mill applications, this system helps monitor torpedo rail cars as they transfer molten material from the blast furnace to the BOF (Basic Oxygen Furnace).

Image Analysis Software for Maxline 2 systems



Backlight Grid Inspection Software for Stinger systems

For Stinger series thermal Imaging systems:

Backlite Thermal Grid Inspection Software - Designed specifically for thermal grid inspection in automotive glass production.

For ScanIR II series thermal scanning systems:

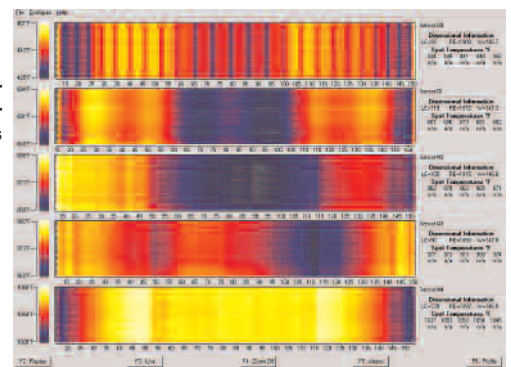
Configurator Software - Our standard operator interface software, designed for basic instrument setup.

ZoneMaster Software - For monitoring intermittent processes such as parts on an assembly line.

SpotMaster Software - For monitoring continuous processes such as films and sheets.

Float Glass Profiler Software - For glass annealing lehrs, capable of displaying profiles of up to five sensors simultaneously.

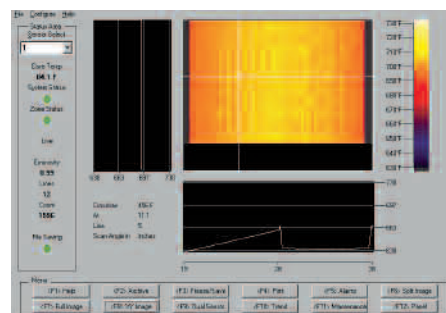
Float Glass Profiler Software for Scan IR II systems



For Modline 5 series Infrared thermometers:

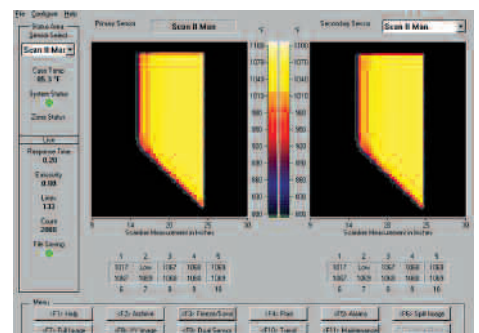
ModView Configuration Software - Shipped with every Modline 5 sensor, this software enables remote configuration and monitoring, and makes initial setup and ongoing setting adjustments easy.

ModView Calibration Software - Designed for Modline 5 users who require periodic verification of sensor calibration, this software, along with a blackbody source and Modline 5 Transfer Standard Unit, helps to assure that other Modline 5 devices are measuring accurately.



SpotMaster Software for Scan IR II systems

ZoneMaster Software for Scan IR II systems



About Us

If you are looking for solutions to difficult temperature measurement and monitoring challenges, IRCON is the company to call. IRCON offers a product range and experience that are unmatched in the industry.

In business since 1962, IRCON products perform with accuracy and repeatability in the harshest and most volatile conditions requiring precise temperature measurement and control.

Our solutions are designed to suit a wide variety of applications, with a product line capable of measuring temperatures from -50° to 3500°C (-50° to 6500°F).

Whether you are in the business of manufacturing or processing metals, glass, plastics, ceramics, paper, textiles, chemicals, packaging, food or pharmaceutical, chances are IRCON has a solution to address your situation.

Global Service and Support Solutions

Beyond leading-edge products and expertise, you can count on IRCON for a variety of valuable services and support options, including:

- On-site technical consulting and troubleshooting
- Operator training
- Sensor re-calibration and certification service

Through our network of nearly 150 distributors around the globe, and service centers in North America, Europe, and Asia – no matter where you are, IRCON specialists are near you to assist.

Count on IRCON to Help You Find Solutions

Feel free to contact us for help in addressing your temperature monitoring challenges.

For additional information, please visit our web site, contact an IRCON specialist in your area, or submit a request at http://www.ircon.com/tech_request

The Worldwide Leader in Noncontact Temperature Measurement

IRCON, Inc.

Worldwide Headquarters

Santa Cruz, CA USA
Tel: +1 800 227 8074 (USA and Canada only)
+1 831 458 3900
info@ircon.com

European Headquarters

Berlin, Germany France United Kingdom
Tel: +49 30 4780080 Tel: 0800 888 244 Tel: +44 1908 630 800

China Headquarters

Beijing, China
Tel: +8610 6438 4691

To find an IRCON office near you, please visit www.ircon.com

Worldwide Service

IRCON offers services, including repair and calibration. For more information, contact your local office or e-mail info@ircon.com

www.ircon.com