

R4750B/C

Protectorelay Flame Safeguard Controls

The R4750B and R4750C are flame safeguard controls used to provide automatic operation and safety of combustion in medium sized gas-fired burners that have a maximum burning capacity of 580kW/h (500,000Kcal/h) or less.

They are constructed from reliable components to ensure that the combustion equipment operates in the correct sequence without fail.



Specifications

Model No.	R4750B	R4750C
Flame detector	Flame rod C7007B, C7008A	C7027A, C7035A
Power consumption	7W +25% max.	
Ambient temperature	-20 to +60°C	
Ambient humidity	90% RH at 40°C	
Mass	680g	
Flame/alarm indicator LED	Lit: normal combustion Flashing: loss of flame while burner operating, ground short-circuit, or false flame signal at start-up	

Contact Ratings

Terminal No.	Load	Contact rating
5	Ignition transformer	R4750B: 350VA R4750C: 250VA
3	Pilot valve	200VA
4	Main valve	200VA (note)
A1, A2	Alarm	75VA

Note: For solenoid valve: 400VA at opening, and 200VA during hold

Selection Guide

Model No.	Power (50/60Hz)	Sequence timing (at normal temperature, normal humidity, rated voltage)				
		Prepurge	Ignition trial	Post-ignition	Lockout	Flame response
R4750B108-2	100Vac	33 ± 8s	4 ± 1s	11 ± 4s	Max. 23s	1.5 ± 0.5s
R4750B208-2	200Vac					(At 2μA flame current)

Note: Sequence in event of flameout: non-recycle

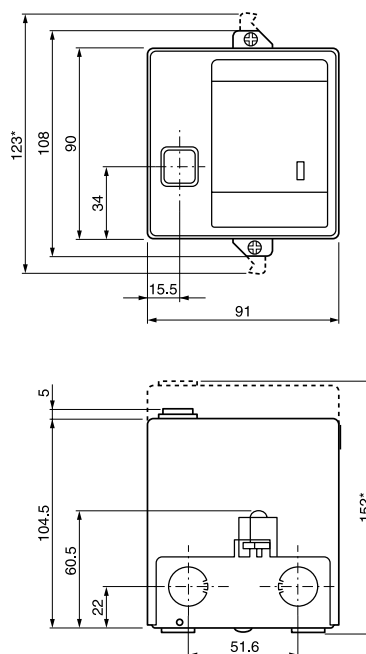
Model No.	Power (50/60Hz)	Sequence timing (at normal temperature, normal humidity, rated voltage)					
		Prepurge	Ignition trial	Spark	Post-ignition	Lockout	Flame response
R4750C1007	100Vac	2.5 ± 1.5s	4 ± 1s	5 ± 1s	7.5 ± 2.5s	Max. 30s	1.5 ± 0.5s (At 5.5µA flame current)
R4750C1015	200Vac						
R4750C1023	100Vac						
R4750C1031	200Vac	33 ± 6s					
R4750C1049	100Vac	40 ± 20s					
R4750C1056	200Vac						

Accessories (sold separately)

Model No.	Description
83968019-001	Surge absorber

Dimensions

(Unit: mm)



*Dimensions required for mounting and removing body.